

MAIN NEWS

- ➤ **MAIN Releases Statewide AI Framework for Mississippi**
 - Developed by the AI Workforce Readiness Council, the framework advances statewide AI priorities and includes the AI Learning Progression Map for education and workforce alignment.
- ➤ **MAIN Visits ERDC to Strengthen Mississippi's AI Innovation Ecosystem**
 - MAIN engaged ERDC leaders on AI, advanced computing, robotics, research capacity, and Mississippi's growing innovation ecosystem.



PICTURED: MAIN VISITING ERDC HPC SUPERCOMPUTER IN VICKSBURG, MS

MAIN RESOURCES

- ➤ **FREE AI RESOURCES FOR ALL!**
 - 10+ NO-COST AI COURSES! ENROLL NOW!
 - Up to 6.4 CEUs for K-12 at NO-COST!
 - Intro to GenAI (K-12) course!
 - NVIDIA Courses (Pilot)!
- ➤ **NVIDIA Resources!**
 - **Workforce & Students:** Explore no-cost self-paced AI courses at NVIDIA DLI.
 - **Faculty Ambassador Program:** Access no-cost Teaching Kits, training, and certification through NVIDIA's DLI!
 - **Complete the Interest Form!**
- ➤ **AI Innovation Hub!**
 - Explore the partnership between MDITS, AWS and MAIN to drive AI innovation across the state.
 - State Agency? Student? Educator?
 - **Complete the Interest Form!**

MAIN NEWS

- ➤ **MAIN Represents Mississippi at Industries of Ideas Convening**
 - Dr. Napier connected AI, R&D, workforce data, education, and economic development to Mississippi's competitiveness.
- ➤ **MAIN Joins AI-Driven Manufacturing Panel in Canton**
 - Wayne Francis highlighted AI's role in predictive maintenance, automation, quality inspection, and workforce development.
- ➤ **MAIN Joins Southeastern Leadership Conference Technology Panel**
 - Wayne Francis discussed how AI and digital transformation are reshaping competitiveness, operations, and workforce needs.
- ➤ **MAIN Leads Microsoft Copilot Workshop for State Government**
 - Dr. Napier helped public sector professionals move from AI awareness to responsible Microsoft Copilot use.
- ➤ **AI Innovation Hub Showcases Public Sector Use Cases**
 - Student teams presented AI proof-of-concept solutions with the Secretary of State's Office, ITS, MAIN, and AWS.
- ➤ **Dr. Kollin Napier Keynotes Phi Theta Kappa Induction Ceremony**
 - Dr. Napier encouraged PTK inductees through reflections on leadership, growth, character, and opportunity.
- ➤ **MAIN Joins Data Science Task Force at Mississippi State RCU**
 - Dr. Napier helped advance conversations around data science pathways, workforce demand, curriculum design, and student career readiness.
- ➤ **MAIN Highlights AI Strategy for Mississippi Tourism**
 - Dr. Napier shared practical guidance on AI policy, digital presence, and responsible use for tourism leaders across Mississippi.
- ➤ **MAIN Shares Mississippi's AI Vision with Hattiesburg Rotary**
 - Dr. Napier discussed AI workforce development, responsible adoption, and Mississippi's opportunity to lead through statewide coordination.
- ➤ **Dr. Kollin Napier Completes Advanced AI Policy Clinic**
 - Dr. Napier strengthened MAIN's policy leadership through advanced work in AI governance and responsible adoption.



PICTURED: DR. NAPIER CONDUCTING MICROSOFT COPILLOT AI WORKSHOP FOR MDA IN JACKSON, MS

MAIN CONTACT

➤ Website ➤ Facebook

➤ LinkedIn ➤ X (Twitter)

➤ Community of Practice

MAIN Director

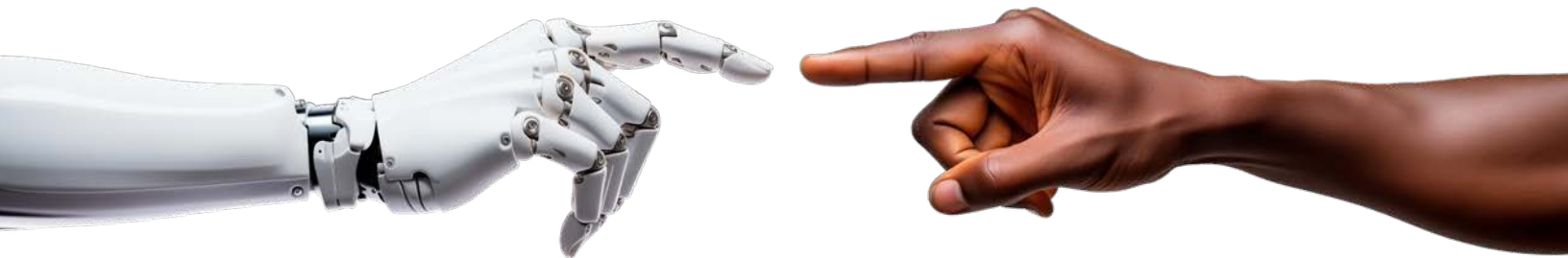
Dr. Kollin Napier

kollin.napier@mgccc.edu

MAIN

MISSISSIPPI ARTIFICIAL INTELLIGENCE NETWORK

Our nation's first statewide artificial intelligence (AI) initiative



**START YOUR AI TRAINING TODAY
TO SHAPE THE FUTURE OF YOUR CAREER**

**ENROLL NOW IN FREE AI COURSES
PROVIDED BY MAIN**

*For more information contact:
MAIN Director, Dr. Kollin Napier
MAIN@mgccc.edu*



MAINMS.ORG

MAIN partners with all public higher education institutions in the state, AccelerateMS, the Mississippi Department of Information Technology Services, and industry leaders including Intel, Amazon Web Services (AWS), and NVIDIA. MAIN also includes members from leading public and private organizations across Mississippi.



xAI (Grok) + State of Mississippi Webinar



Thursday, May 14



10 AM - 11 AM CDT



Leveraging AI for
Collaboration &
Prompt Engineering



Embedding Grok
in Applications



Grok Voice API



Grok Imagine API



Register
mainms.org/xai-webinar

'Build It Yourself'

Agentic AI Series

Virtual training to equip you with essential insights and tools to advance your agentic AI expertise.



Explore NVIDIA's agentic AI innovations through hands-on sessions designed for students, professors, researchers, and early career developers. Move beyond chatbots to build autonomous, goal-driven agents ('claws') that can plan, reason, and act. Learn with the **NVIDIA NemoClaw** and **OpenShell** software stack. No specialized hardware is required to follow along; **NVIDIA DGX Spark** is recommended for full hands-on replication.



Session Lineup



Virtual Sessions

May 12

Build an Academic Planner With Agentic AI



May 14

Turn Agent Into Research Assistant



May 19

Make Claws Collaborate as a Research Team



May 22

AI Teaching Assistants



Register:

<https://www.nvidia.com/en-us/events/build-it-yourself-agentic-ai/>



NVIDIA

MAIN

MISSISSIPPI ARTIFICIAL INTELLIGENCE NETWORK

Our nation's first statewide artificial intelligence (AI) initiative.

Mississippi K-12 Educators!

mainms.org/courses

AI COURSE

NO-COST



✿ Enroll in the Intro to Generative Artificial Intelligence (GenAI) course by MAIN to learn AI skills! ✿

Open now until June 15, 2026!

Earn up to 6.4 CEUs!

@ NO-COST

Online!
Self-paced!

ENROLL NOW!

AI

Stay Connected with MAIN:

MAIN@mgccc.edu

mainms.org

mgccc.edu/MAIN

April 2026 AI News Roundup

Key AI developments across industry, policy, and investment

Model Releases and AI Products

- OpenAI launches GPT-5.5 (Apr 23)
 - <https://openai.com/index/introducing-gpt-5-5/>
- Anthropic releases Claude Opus 4.7 (Apr 16)
 - <https://www.anthropic.com/news/claude-opus-4-7>
- DeepSeek previews V4 Pro & Flash with 1M context (Apr 24)
 - <https://techcrunch.com/2026/04/24/deepseek-previews-new-ai-model-that-closes-the-gap-with-frontier-models/>
- Anthropic launches Claude Design preview (Apr 17)
 - <https://www.anthropic.com/news/claude-design-anthropic-labs>
- Google launches Gemini Enterprise Agent Platform + TPU 8 (Apr 22)
 - <https://cloud.google.com/blog/products/ai-machine-learning/introducing-gemini-enterprise-agent-platform>

Major Acquisitions, Mergers, and Investments

- Google commits up to \$40B to Anthropic (Apr 24)
 - <https://www.nytimes.com/2026/04/24/technology/google-anthropic-investment-artificial-intelligence.html>
- OpenAI acquires Hiro AI finance startup (Apr 13)
 - <https://techcrunch.com/2026/04/13/openai-has-bought-ai-personal-finance-startup-hiro/>
- Cohere agrees to acquire Aleph Alpha (Apr 24)
 - <https://www.reuters.com/business/canadas-cohere-buy-germanys-aleph-alpha-2026-04-24/>
- NVIDIA acquires SchedMD (Slurm) (Apr 6)
 - <https://www.reuters.com/technology/nvidia-acquisition-schedmd-sparks-worry-among-ai-specialists-about-software-2026-04-06/>
- China blocks Meta's \$2B Manus acquisition (Apr 27)
 - <https://www.bloomberg.com/news/articles/2026-04-27/china-blocks-meta-s-2-billion-acquisition-of-ai-startup-manus?srnd=phx-deals>

Corporate Strategy, Expansion, and Infrastructure Announcements

- Microsoft hits \$37B AI annual revenue run rate (+123% YoY) (Apr 29)
 - <https://news.microsoft.com/source/2026/04/29/microsoft-cloud-and-ai-strength-fuels-third-quarter-results/>
- Meta raises 2026 capex to \$125-145B for AI (Apr 29)
 - <https://www.reuters.com/business/meta-lifts-capital-expenditure-forecast-doubling-down-ai-push-2026-04-29/>
- OpenAI's Stargate surpasses 10GW U.S. target (Apr 29)
 - <https://openai.com/index/building-the-compute-infrastructure-for-the-intelligence-age>
- OpenAI & AWS expand partnership: models on Bedrock + Codex on AWS (Apr 28)
 - <https://openai.com/index/openai-on-aws/>
- OpenAI & Microsoft amend alliance, end exclusivity (Apr 27)
 - <https://openai.com/index/next-phase-of-microsoft-partnership/>

Federal and State Legislation & Regulatory Actions

- GSA proposed AI procurement clause advances amid industry pushback (April)
 - https://buy.gsa.gov/interact/system/files/GSA_Federal_Acquisition%20Service%20Proposed%20Government%20AI%20System%20Terms%20and%20Conditions.pdf
- Google amends \$200M DOD contract for classified Gemini use (April)
 - <https://www.nytimes.com/2026/04/28/technology/google-ai-deal-pentagon.html?smid=nytcore-ios-share>
- House launches probe into Chinese AI model risks at U.S. firms (April)
 - <https://chinaselectcommittee.house.gov/media/press-releases/chairmen-moolenaar-garbarino-announce-joint-investigation-into-airbnb-anysphere-and-the-national-security-risks-posed-by-chinese-ai-models>
- Bipartisan bills introduced: CREATE AI Act (NAIRR), LIFT AI Act, American Leadership in AI Act (April)
 - <https://www.congress.gov/bill/119th-congress/senate-bill/4441>

AI Prompting Guides

— From the Mississippi Artificial Intelligence Network (MAIN) —

Free beginner-friendly ChatGPT prompt guides for professionals across Mississippi.



100 Beginner ChatGPT Prompts for Small Business

<https://mainms.org/beginner-chatgpt-prompts-small-business/>



100 Beginner ChatGPT Prompts for Healthcare Professionals

<https://mainms.org/beginner-chatgpt-prompts-healthcare/>



100 Beginner ChatGPT Prompts for K-12 School Personnel

<https://mainms.org/beginner-chatgpt-prompts-k12/>



100 Beginner ChatGPT Prompts for Higher Education Professionals

<https://mainms.org/beginner-chatgpt-prompts-higher-education/>



100 Beginner ChatGPT Prompts for Manufacturing Professionals

<https://mainms.org/beginner-chatgpt-prompts-manufacturing/>



Learn more:

<https://mainms.org/prompting-guides/>



AI Policy Guides

Practical templates for responsible AI adoption in education

Clear guidance for AI use in schools, colleges, and universities.

These MAIN resources help institutions develop aligned expectations for AI literacy, classroom use, academic integrity, privacy, and responsible implementation.



K-12 EDUCATION

AI Policy and Guidance Template for K-12 Education

For districts and K-12 leaders developing clear AI guidance.

mainms.org/ai-policy-and-guidance-template-k12-education/



HIGHER EDUCATION

AI Policy and Guidance Template for Higher Education

For colleges and universities developing clear AI guidance.

mainms.org/ai-policy-guidance-template-higher-education-2026/



Learn more

mainms.org/policy-guides/

MAIN

MISSISSIPPI ARTIFICIAL INTELLIGENCE NETWORK

University Ambassador Program

Bring new possibilities to your academic community with hands-on training, an enhanced curriculum, and access to GPUs.



FOR EDUCATORS AND RESEARCHERS

Become an Ambassador

- Deliver free, world-class AI training across your campus, from classrooms to conferences.
- Gain early access to new teaching kits and free online DLI courses for your students.
- Earn free instructor certification valued at \$1,000.
- Receive workshop-specific instructor certificates to validate expertise.
- Plus additional benefits.



FOR ALL LEARNERS

Deep Learning Institute (DLI)

- Hands-on training in AI, accelerated computing, and data science to tackle real problems.
- Work directly with industry-standard software, tools, and frameworks.
- Join live, instructor-led workshops taught by NVIDIA-certified experts.
- Earn NVIDIA course certificates and certifications to validate your skills.



Phase 1 Application



Candidate Acceptance

Phase 2 Evaluation



Instructor Certification

<https://mainms.org/nvidia>



NEW No-Cost AI Courses (Pilot)

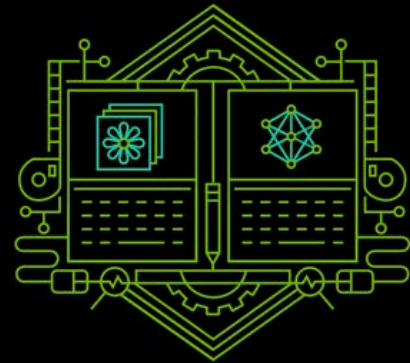


DEEP
LEARNING
INSTITUTE



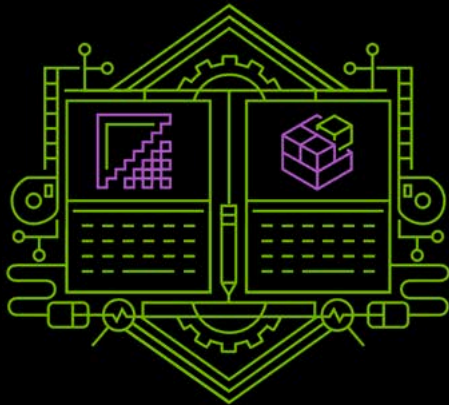
Data Science

In collaboration with the Georgia Institute of Technology (Georgia Tech) and Prairie View A&M University, this Teaching Kit focuses on GPU-accelerated algorithms and data science using the RAPIDS™ framework. The content has also been developed with cultural awareness, addressing issues such as bias and fairness in data science.



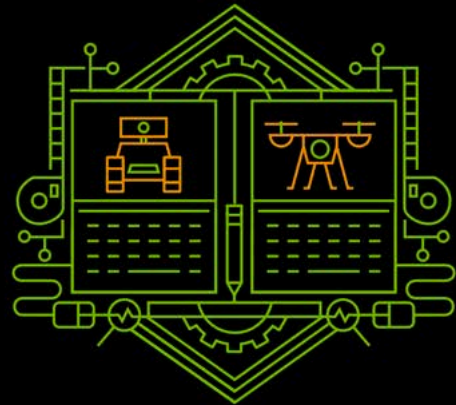
Deep Learning

Co-developed with Professor Yann LeCun and his team at New York University (NYU), this Teaching Kit leverages the latest computing frameworks and techniques to explore introductory and advanced deep learning topics, from image classification to generative adversarial networks (GANs) to natural language processing (NLP).



Accelerated Computing

Co-developed with Professor Wen-Mei Hwu and his team from the University of Illinois (UIUC) and Professor Sunita Chandrasekaran and her team from the University of Delaware, this Teaching Kit covers introductory and advanced topics such as parallel programming APIs, programming tools and techniques, principles and patterns of parallel algorithms, and processor architecture features and constraints.



Edge AI and Robotics

In collaboration with the University of Oxford and the University of Maryland Baltimore County, the Edge AI and Robotics Teaching Kit includes lecture slides and hands-on labs spanning topics such as big data and IoT, vision AI, reinforcement learning, conversational AI, diversity, ethics, and security, as well as autonomous robotics.

Courses will be available March 1 through June 30 as part of the pilot phase.

ENROLL mainms.org/courses FREE

Powering the Future with ITS, AWS, and MAIN



Mississippi Department of
Information Technology
Services



Amazon Web
Services



Mississippi Artificial
Intelligence Network

Benefits:

Accelerated
Innovation

Workforce
Development

Economic
Growth

Improved
Public
Services

Enhanced
Coordination

Key Features

- Proof of Concept (POC) Investment: AWS funds AI application pilots within ITS AWS landing zones, giving higher ed students sandbox access to build real-world POCs and while being low risk for PoC proposers.
- Open Source Solution: All POCs end with an open-source solution that can be built upon in production.
- Educational Investment: The Hub supports multidisciplinary student teams enrolled in MS universities throughout the process and facilitates meaningful connections to the workforce.
- Digital Innovation Support: ITS, MAIN, and AWS deliver workshops to identify AI opportunities and create innovation roadmaps.

Ready to get involved?

Scan the QR code below to submit
a use case or request training:



For more information about the
AI Innovation Hub, please contact:
InnovationHub@its.ms.gov

<https://www.its.ms.gov/services/innovating/AI-Innovation-Hub>

Agentic AI Use Cases for State Government

Health & Human Services, Medicaid, Finance, Revenue, Emergency Management

- 1. Multi-System Case Orchestration Agent:** Automatically gathers information across eligibility, Medicaid, child welfare, public safety, and ERP systems to assemble case packets, detect missing information, prioritize queues, and trigger next-step tasks. Reduces manual data chasing and speeds case resolution.
- 2. Citizen “One Front Door” Service Agent:** A unified conversational entry point (web/SMS/phone) that completes actions: checks application status, updates personal information, schedules appointments, drafts notices, and routes complex issues to staff with full context.
- 3. Document Intake & Decision Support Agent:** Ingests scanned or uploaded documents (income proof, medical records, tax forms), classifies them, extracts key fields, validates against system of record, and recommends case actions (approve, pend, request info). Health & Human Services / Medicaid
- 4. Eligibility Determination Agent:** Runs eligibility logic across multiple data sources, identifies inconsistencies, pre-fills decisions, drafts notices, and routes exceptions to specialists—accelerating processing and reducing churn.
- 5. Redetermination & Outreach Automation Agent:** Proactively identifies upcoming redeterminations, checks available data sources for auto-renewal, triggers reminder campaigns, and tracks citizen completion in real time.
- 6. Care Management & Risk Monitoring Agent:** Monitors claims, encounters, and SDOH signals to identify high-risk members, produce actionable summaries for care teams, schedule follow-ups, and track intervention outcomes.
- 7. Prior Authorization Review Agent:** Reads clinical submissions, extracts relevant medical information, aligns requests to policy standards, highlights missing data, and drafts structured recommendations for reviewer sign-off.
- 8. Program Integrity & Fraud Detection Agent:** Continuously analyzes claims and provider patterns, surfaces anomalies, assembles supporting evidence, and initiates investigative workflows.

Finance, ERP, & Back-Office Operations

- 1. ERP Workflow & Compliance Agent:** Monitors purchase orders, invoices, and travel claims for compliance with policy and budget rules; routes exceptions; recommends account coding; provides traceable reasoning for approvals.
- 2. Budget & Scenario Modeling Agent:** Reads historical spend trends and statutory requirements, simulates “what-if” funding scenarios, and generates narrative-ready budget justifications.
- 3. Grant Management & Reporting Agent:** Tracks spend-down rates, reporting deadlines, and compliance conditions; drafts required reports using ERP and program data; flags at-risk funds.
- 4. Vendor & Contract Performance Agent:** Evaluates deliverables, timelines, and SLA adherence; produces performance summaries; and drafts corrective communications or escalation notes.

Revenue & Tax

- 1. Taxpayer Self-Service & Filing Agent:** Guides taxpayers through filings or payment plans, pre-checks entries against permitted data sources, and creates or updates tax cases with accurate documentation.
- 2. Collections & Compliance Automation Agent:** Scores delinquent accounts, orchestrates targeted outreach workflows, proposes payment options, and escalates cases requiring legal or administrative action.
- 3. Audit Targeting & Case Preparation Agent:** Identifies high-risk returns, assembles case packets (returns, historical correspondence, data sources), drafts initial notices, and recommends audit paths.
- 4. Tax Policy Impact Analysis Agent:** Reads proposed legislation and automatically models revenue impact, compliance considerations, and plain-language summaries.

Emergency Management & Public Safety

- 1. Incident Intake & Triage Agent:** Processes incident reports (web, transcribed calls, SMS), classifies severity, populates case systems, assigns responders, and monitors resolution progress.
- 2. Disaster Resource Matching Agent:** Maps citizen needs to available resources (shelters, food, medical support), orchestrates field notifications, and updates situational awareness dashboards.
- 3. Post-Disaster Assistance Agent:** Guides households through sequential state and federal assistance programs, pre-fills applications using assessment data, and tracks household progress end-to-end.

Join Mississippi's AI Community of Practice

Connect with educators, workforce leaders, industry experts, and government officials across Mississippi to collaborate on AI ideas, resources, and real-world wins.

- ✓ Ask questions. Share wins. Get unstuck.
- ✓ Discover events, prompts, tools & real Mississippi AI examples
- ✓ Open to every educator, workforce leader, industry expert & government official in Mississippi

Scan to Join on Slack



or visit: mainms.org/slack

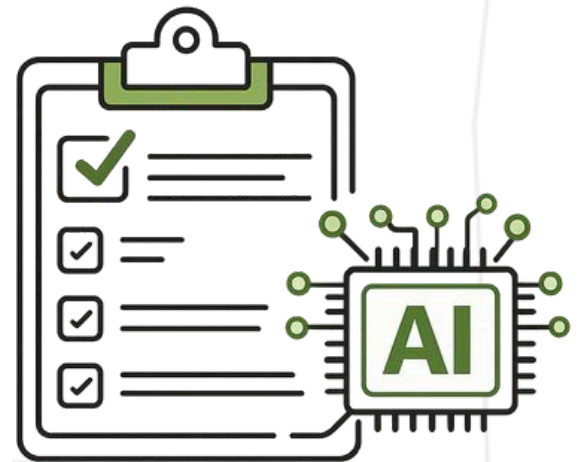
JOIN NOW ➔ mainms.org/slack ➔ **FREE TO JOIN**

Mississippi Workforce AI Needs Assessment

For Mississippi employers:

Help shape Mississippi's AI-ready workforce by sharing your organization's AI skill needs and challenges. Your input will directly guide new training programs and statewide initiatives.

Scan to Take the Assessment



or visit:

mainms.org/ai-workforce-survey