



TOP STORY

MAIN Addresses Agentic AI at MAHP 2026

Dr. Napier opened the state's health-plans conference with a practical look at agentic AI and the human oversight leaders need now.

[READ THE STORY →](#)

SPOTLIGHT

NEW FREE AI COURSES

Brand-new, short-term options to build practical skills, no semester required.

NEW MAIN QUICK COURSES

- NVIDIA Generative AI
- AI for Manufacturing
- AI for Healthcare
- AI for Business
- AI for Educators (K-12)

Each earns a micro-credential. AI for Educators (K-12) also earns CEUs.

+ More courses coming soon

NEW COURSERA OPTIONS

- Microsoft 365 Copilot
- Google AI Professional Certificate

Earn the Google AI Professional Certificate.

[EXPLORE FREE COURSES →](#)

MAIN NEWS



02 Manufacturing AI Panel

AI for less downtime, better quality, and predictive maintenance.

[READ MORE →](#)



03 AI Summer Summit

Help students evaluate AI answers and still show their work.

[READ MORE →](#)



04 Healthcare AI at MSHIMA

Reliable healthcare AI starts with trustworthy records and data governance.

[READ MORE →](#)



05 GCBC Regional Planning

Studying Gulf Coast assets to inform a regional "Plan of Plans."

[READ MORE →](#)

NEW POLICY GUIDES

AI policy & guidance templates

- K-12 Education
- Higher Education
- State Government
- Local Government
- Healthcare
- Business
- Finance

[EXPLORE POLICY GUIDES →](#)

RESOURCE OF THE MONTH

Seven Tips for Better AI Prompts

1. Be specific
2. Give context
3. Assign a role
4. Show an example
5. Ask for a format
6. Iterate
7. Review the output

[READ THE FULL GUIDE →](#)

NEW PROMPTING GUIDES

Role-based prompt libraries

- Small Business
- Healthcare
- K-12 Education
- Higher Education
- College Students
- Manufacturing
- Finance

[EXPLORE PROMPTING GUIDES →](#)

Mississippi Statewide AI Framework

Statewide Priorities and Learning Progression

— FIVE STATEWIDE PRIORITIES —

01

**Literacy
& Access**

02

**Ethics &
Critical Thinking**

03

**Privacy &
Governance**

04

**Workforce
Readiness**

05

**Strategic
Alignment**

— LEARNING PROGRESSION —

1

K-12

*Foundational
Awareness & Practice*

2

POSTSECONDARY

*Applied &
Technical Fluency*

3

WORKFORCE

*Professional Application
& Accountability*

A PUBLICATION OF

The AI Workforce Readiness Council

Produced by the Mississippi Artificial Intelligence Network (MAIN)

EDITION

April 2026



OFFICIAL

Governor's Announcement



governorreeves.ms.gov

HOSTED BY

AccelerateMS · SWIB



acceleratems.org/swib

LEARN MORE

AI Workforce Readiness Council

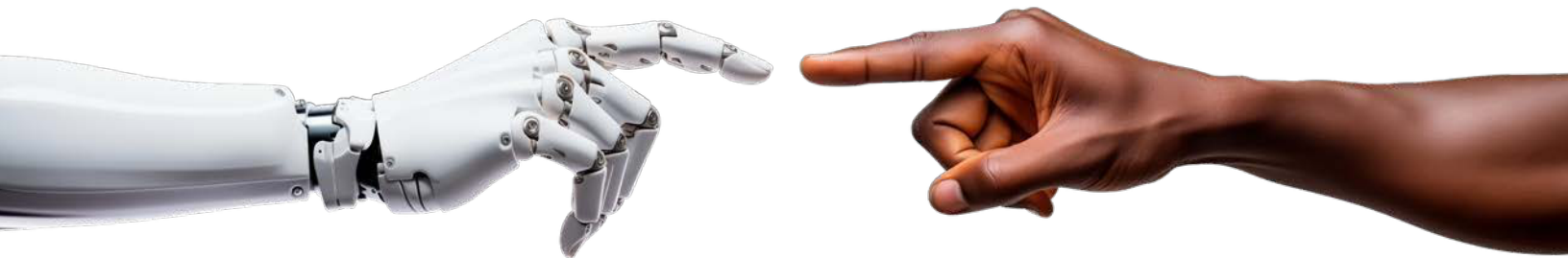


mainms.org/ai-council

MAIN

MISSISSIPPI ARTIFICIAL INTELLIGENCE NETWORK

Our nation's first statewide artificial intelligence (AI) initiative



**START YOUR AI TRAINING TODAY
TO SHAPE THE FUTURE OF YOUR CAREER**

**ENROLL NOW IN FREE AI COURSES
PROVIDED BY MAIN**

*For more information contact:
MAIN Director, Dr. Kollin Napier
MAIN@mgccc.edu*



MAINMS.ORG

MAIN partners with all public higher education institutions in the state, AccelerateMS, the Mississippi Department of Information Technology Services, and industry leaders including Intel, Amazon Web Services (AWS), and NVIDIA. MAIN also includes members from leading public and private organizations across Mississippi.